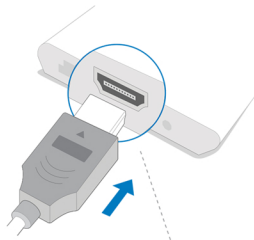


Set Up Your DIRECTV STREAM Device

1

Plug the HDMI cable into your DIRECTV STREAM Box.

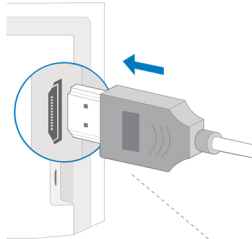


Make sure the HDMI cable is oriented correctly.



2

Plug the other end of the HDMI into your TV.

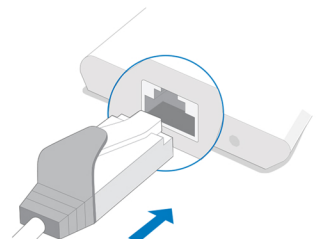


Make sure the HDMI cable is oriented correctly.



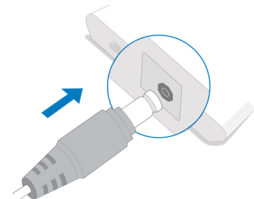
3

Using ethernet? Plug it in now. If not, proceed to 4.

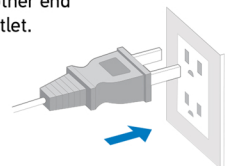


4

Plug the power supply into the DIRECTV STREAM Box.



Plug the other end into an outlet.

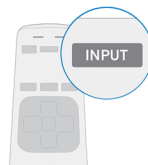


5

Switch on your TV with the remote you usually use.

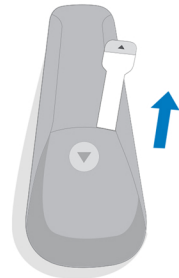


Blank screen?
You may need to
switch TV input.



6

Gently remove the slip from the DIRECTV STREAM remote.



7

Now, follow the on screen prompts to continue setup. This process includes such steps as accepting terms and conditions, remote pairing, and software updates. It can take several minutes to complete.



Enter Your Wi-Fi Network Name & Password

You'll need to connect using Wi-Fi if you aren't using ethernet.



Enter User ID & Password

If you need to recover or create these, you can do so at directv.com/AccountLogin.



Need help?
Take a photo of
this QR Code with
your phone.

or

Visit www.directv.com/TVwelcome
for helpful videos and support.

OPTIONAL



Sign in to your Google Account

Unlock the full potential of Google Assistant by signing in. Access connected devices, get personalized responses, and much more.